

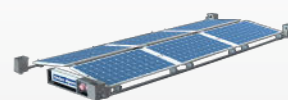
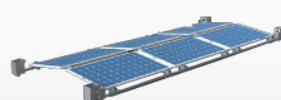
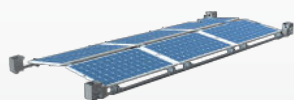
Solar Apex

ATTACH. CONNECT. ENERGY.

Flexible plug and play containerised solar solution



Solar Apex



	BASIC	COMBI	FLEX
Transport Box	✓	✓	✓
Flex Frame	✓	✓	✓
Solar Panels	✓	✓	✓
ISO-Corners	✓	✓	✓
Micro-Inverters		✓	✓
E-Box			✓

Solar Apex: Rooftop Net Zero Solar Package

Introducing Solar Apex, the ultimate solution for rooftop solar applications on containerised spaces including accommodations and welfare units. Our innovative design offers unparalleled flexibility, making installation a breeze across various container sizes.

With our ONE FITS ALL Design, you can seamlessly install our system on different container dimensions. The robust ISO-Corners ensure stability while allowing the entire container to be lifted effortlessly through the Solar Apex system, even while connected.

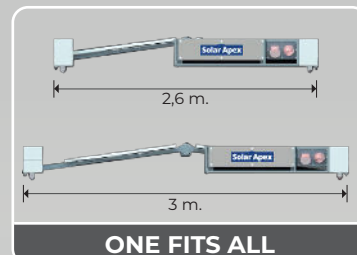
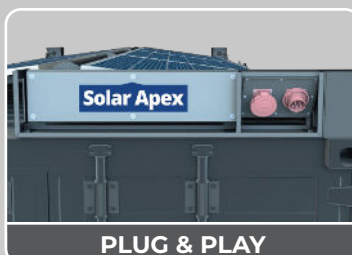
Our system comes in two variants: the BASIC version, featuring a flexible frame and pre-assembled PV panels, and our Plug Play TOTAL version, combining the Basic with pre-assembled components for easy setup.

Scale your energy needs effortlessly with our modular design enabling a comprehensive solution for multiple containers, onsite offices, or accommodation.

Crafted with precision in Australia by the Blue Diamond Engineering team, the Solar Apex Net Zero System ensures reliability and quality.

Make your construction, mine site or event more cost effective and sustainable by combining it with Blue Diamonds Battery Energy Storage systems.

Designed and manufactured exclusively by Blue Diamond from our own Clean Energy and Engineering Hub.



SOLAR APEX FLEX

TECHNICAL INFORMATION



Solar power	from 2,2 kWp
Connectable	yes / Flex & Combi
Feeding	into the existing power grid
Power Connection	CEE 32A 400V input/output
Locking	ISO-Twistlock
Dimensions standard	6060 x 2440 x 280 mm
Dimensions telescopic	6060 x 3000 x 280 mm
Dimensions Transport Box	2.158 x 1090 x 1.405mm
Total weight	approx. 400 kg
Crain able	yes / with Container up to 5 t
Monitoring	via App